

Garmin G3X™

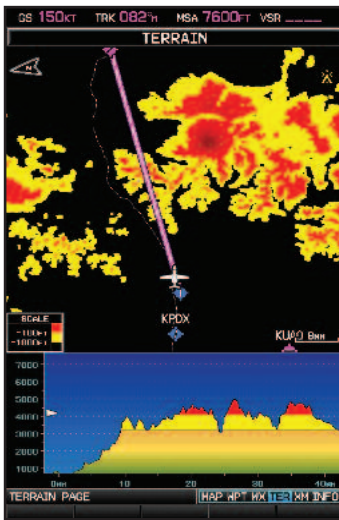
ELECTRONIC FLIGHT DISPLAY SYSTEM FOR LIGHT SPORT AND EXPERIMENTAL AIRCRAFT



It's time for a flight deck reality check.

Providing an affordable non-TSO'd "glass cockpit" option for retrofit installation in light sport (LSA) and experimental/kitbuilt aircraft, the Garmin G3X™ is a real breakthrough. Designed around the GDU 370/375 series panel-mount unit, the G3X system can integrate full primary flight display (PFD) attitude/directional guidance with electronic engine monitoring and detailed moving-map multifunction display (MFD) capabilities. Combining flexible architecture with a G1000-like interface, the easy-to-install GDU features a big 7-inch high-definition WVGA

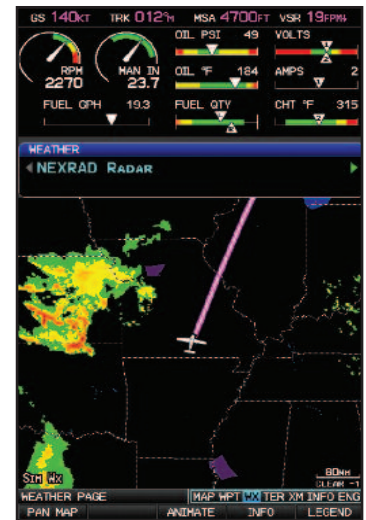
screen, built-in GPS receiver, rotary joystick cursor control for data entry, and softkeys for mode selection. GPS-aided digital ADAHRS ensures ultra-precise electronic attitude/heading reference. On the MFD, Garmin FliteCharts® and SafeTaxi® come pre-installed¹, along with database-driven terrain and obstacle alerting. There's support for NEXRAD imaging and all the other great XM WX™ satellite weather capabilities². Plus, a built-in network interface allows up to three displays to be interlinked in the panel, with full reversionary backup for added safety and redundancy.



Terrain page offers overhead and vertical profile views



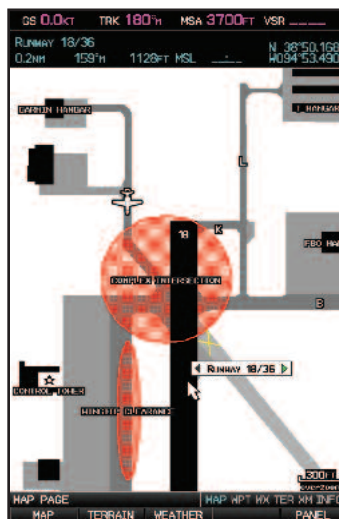
XM Radio support lets you enjoy 170+ audio channels²



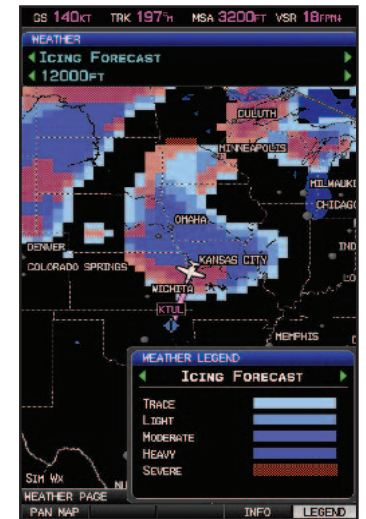
NEXRAD weather on MFD with engine instruments



Single screen with engine instruments, PFD and destination information page or other MFD-like information



Taxiway diagrams for 900+ U.S. airports with "Hot Spots"

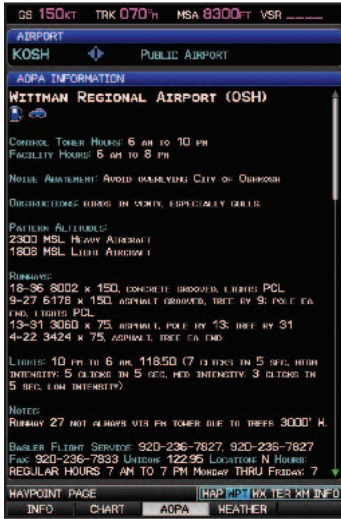


Available XM WX™ data includes potential icing forecasts²

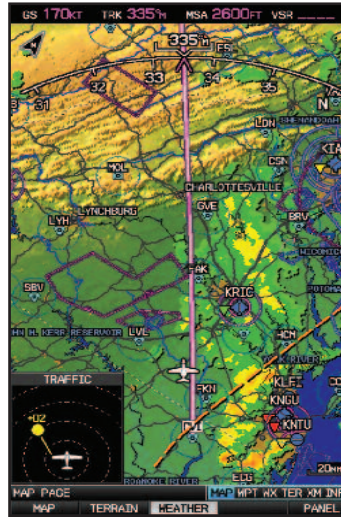


Possible configurations

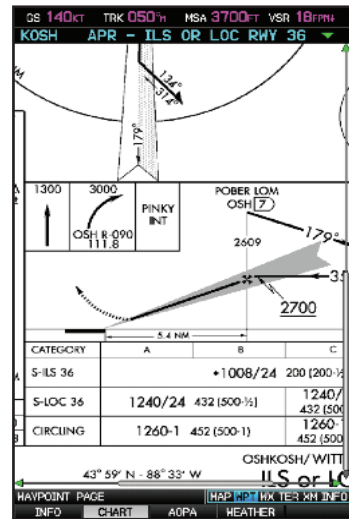




AOPA Airport Directory holds data on 7,400+ U.S. airports



Optional traffic TIS can overlay on moving map²



Users can pan and zoom to focus on specific chart details



IFR map mode shows high and low enroute airways

Key product features:

- Panel-mount unit features 7-inch WVGA screen and dual redundant power inputs.
- Offers full primary flight (PFD) and multifunction (MFD) display capability – plus electronic engine gauges and monitoring
- GPS-aided ADAHRS (Air Data and Attitude Heading and Reference Systems) use solid-state sensors to provide flight attitude, heading and rate information.
- Garmin FliteCharts®¹ offer NACO-format IFR approach plates and terminal procedures for airports throughout the U.S. (FliteCharts will disable when the data is over 6 months out-of-date).
- Garmin SafeTaxi™¹ data provides detailed taxiway diagrams and position information for over 900 U.S. airports.
- Color-keyed terrain page offers both overhead and vertical profile views of potentially hazardous terrain along your route of flight.
- AOPA Airport Directory data offers detailed information on over 7,400 U.S. airports, along with airports of entry for Canada, Mexico and the Caribbean. Includes names and phone numbers of FBOs and fuel/service facilities, plus ground transportation, ATC data, and more.
- IFR map mode displays Victor airways and Jet routes, derived from the navigation database.
- Traffic Information Service (TIS) alerts are supported via Garmin GTX 330 Mode S Transponder interface.
- GDU 375 supports XM WX™ satellite weather data and audio entertainment²
- Front-loading SD card slot for expansion memory and updates
- Optional GMA 240 audio panel (sold separately) provides compatible non-TSO'd selection for intercom, communication radios, and music.

¹ Updates available on single-cycle or annual basis.

² XM subscription required (sold separately)





GS 140kt

TRK 064°

MSA 7600FT

VSR 6FPM

RPM 2290

MAN IN 23.1

OIL PSI 50

VOLTS

GS 140kt

OIL °F 197

AMPS

170

040

064

5500FT

160

050

10

5700

150

10

10

5600

140

10

10

5500

130

10

10

5400

120

10

10

5300

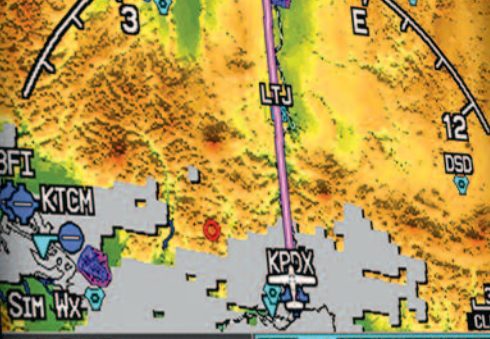
110

10

10

29.92TM

TAS 140kt



MAP PAGE PFD MAP WPT WX TER XM INFO ENG

MAP TERRAIN WEATHER

MAP TERRAIN WEATHER

MAP PAGE PFD MAP WPT WX TER XM INFO ENG

Garmin G3X™ specifications

GDU 370/375 Display Unit

This product holds no TSO certification

Display: 7.0" diagonal (17.78 cm) 480 x 800 pixels, color sunlight readable WVGA TFT with adjustable backlighting. Optional lighting bus voltage input available for automatic backlight control.

Electrical: 10-29 VDC
10 watts typical
Dual isolated power inputs

Size: 6.04"W x 7.83"H x 3.41" D
(15.34 x 19.88 x 8.67 cm)

Weight: GDU 370, 1.56 lb (706g)
GDU 375, 1.65 lb (746g)
Weight does not include nut plate and connector

GPS Receiver: Non-certified, high-sensitivity GPS receiver with WAAS position accuracy and 5 Hz update rate

GPS/XM Antennas: In-cabin and externally mounted options available

Navigation Features:

- Jeppesen aviation database
- Built-in worldwide land basemap
- Terrain and obstacle databases
- Initial FliteCharts® (will disable when data is 6 months out-of-date)
- SafeTaxi® airport diagrams for 900+ U.S. airports
- AOPA Airport Directory

GSU 73 ADAHRS+EIS Unit

This product holds no TSO certification

AHRS:

- Provides accurate digital output and referencing of aircraft position, rate, vector and acceleration data
- Leverages solid-state sensors and sophisticated attitude determination and integrity monitoring algorithms used in Garmin's high-end AHRS units
- Capable of in-flight dynamic restarts
- Capable of maneuvers through a range of 360° in bank and pitch.
- Rotation rate: Up to 200°/sec

Electrical: 10-29 VDC
12 watts typical; 25 watts maximum (based on maximum powered transducer usage)
Dual isolated power inputs

Size: 5.50"W x 3.96"H x 7.33" D
(13.98 x 10.06 x 18.62 cm)

Weight: GSU 73, 3.1 lb (1410g)
Weight does not include mounting hardware and connector

Air Data:

Aircraft pressure altitude range: -1,400 ft. to 50,000 ft.
Aircraft vertical speed range: -20,00 to +20,000 fpm
Aircraft airspeed range: 0 - 450 kts
Aircraft mach range: <1.00 Mach

Engine/Airframe interfaces:

Support is planned for sensors commonly used on Lycoming, Continental, Rotax, and Jabiru engines.

Configurability of the GSU allows measurement of many different aircraft parameters including but not limited to:

- Ammeters (2)
- Thermocouples (Monitor up to 6 cylinders and 2 turbo inlet temperatures)
- Aircraft Bus Voltages
- Resistive Sensors (Up to 6)
- Powered Transducers
- Frequency Counter Inputs (Up to 4)
- Discrete I/O (4 In / 2 Out)

Communication interfaces:

- ARINC 429
- RS-232
- Serial Altitude Encoder Output

GMU 44 Magnetometer Unit

Electrical: Powered through GSU 73

Size: 2.10"H x 3.35" in diameter
(5.33 x 8.51 cm)

Weight: GMU 44, 0.35 lb (158.8 g)
Weight does not include mounting hardware and connector

Accessories

Standard: Free single database update (includes one update for navigation, FliteCharts®, SafeTaxi®, obstacles and towers)
Owner's manual
Quick reference guide

Optional: GA 26 In-cabin GPS antenna
GA 26XM In-cabin XM antenna
GA 57X External XM/GPS combo antenna
GA 56 External GPS antenna
GA 55 External XM antenna



Garmin International, Inc.

1200 East 151st Street, Olathe, KS 66062
p: 913.397.8200 f: 913.397.8282

Garmin (Europe) Ltd., Liberty House, Hounsdown Business Park, Southampton, Hampshire, SO40 9RB, U.K. p: 44.1794.519944 f: 44.1794.519222

Garmin Corporation, No. 68, Jangshu 2nd Road, Shijr, Taipei County, Taiwan 886.2.2642.9199 fax 886.2.2642.9099